



VENTILATION FAN SNS - 350

Dear customers,
Thank you for selecting the AireGard® Ventilator SNS - 350.
Please read through all the instructions before proceeding with installation.

IMPORTANT:

The AireGard® Ventilator must be installed in accordance with local council regulations. This ventilator unit is fitted with a cord. If you require any modifications, please get assistance from a qualified service technician. Additional cables are not included in the box. If there is a need for additional cables, the cable has to be rated at 10amp at least.

WARNING

1. Only install the AireGard® Ventilator as recommended in the user manual. Any other installation method not mentioned in the user manual may be hazardous and cause harm. If you require assistance, kindly contact us via our toll-free number at 1300-88-4273.
2. Installation must be conducted by a qualified technician. Please ensure the installation of the louvers or exhaust fans are in accordance with local council regulations.
3. Ensure the main power is turned off before proceeding with installation.
4. Avoid damaging nearby cables when coring the wall.
5. Ensure that the unit is properly grounded.
6. To avoid any complications, please ensure that the ventilator's duct is not placed in direct contact with volatile gas tubes (if present).
7. The unit must be isolated from the power source by means of a plug or an all-pole disconnection switch with a contact separation of at least 3mm in each pole.
8. The power cable has to withstand a minimum of 10amp.
9. This appliance is not intended for use by persons (including children) with reduced physical, sensory, or mental capabilities, or lack of experience and knowledge, unless they have been given supervision or instruction concerning use of said appliance by a person responsible for their safety. Children should be supervised to ensure that they do not play with the appliance.
10. Precautions must be taken to avoid back flow of gases into the room via the ventilator's duct.
11. **WARNING:** If any abnormality is observed when the ventilator is in use, turn off the unit immediately and contact the manufacturer.
12. The brackets used to hold the ventilator unit must be able to withstand at least 4 times the weight of the unit.
13. Mounting of the brackets must be handled by a qualified technician.
14. Replacement of any parts must be performed by the manufacturer or a qualified technician.
15. **WARNING:** The height from the floor to fan's blade should be more than 2.3m.

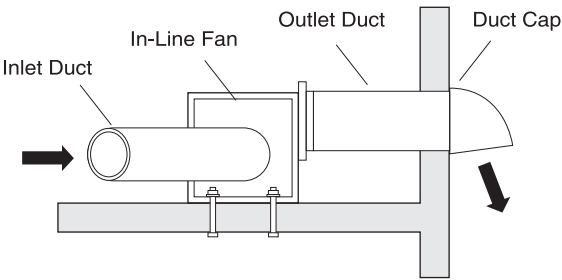
IMPORTANT CONSIDERATIONS BEFORE INSTALLING

- Plan ahead to avoid any complications when installing the ventilator.
1. The ventilator must not be mounted in the shower; avoid direct contact with water.
 2. In order for the ventilator to work efficiently, the extraction of air should be replaced by air entering the room. An airtight room will cause the ventilator to perform poorly.
 3. The ventilator should only be installed flat into the ceiling only.
 4. Before coring the wall, ensure that the intended opening does not intersect with any vital structures. Ensure there is enough height clearance in the ceiling. Ensure that the electrical wiring is able to be routed from the intended switch area to the ventilator unit.

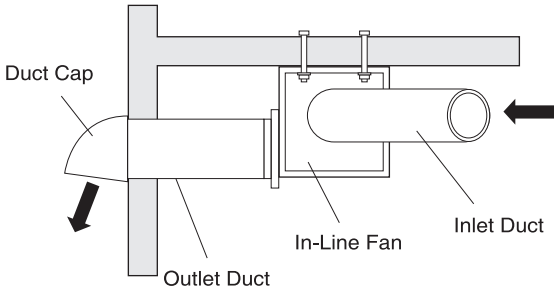
Note: Ensure that there are no redundant wires interfering with the ventilator unit.
Note: For the best performance from the ventilator unit, ensure that the duct is placed as straightly as possible.

INSTALLATION

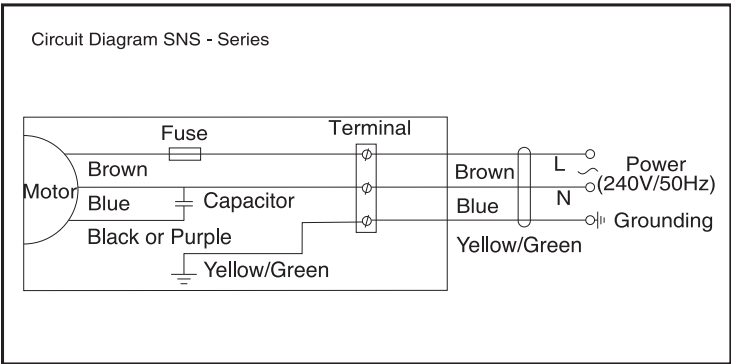
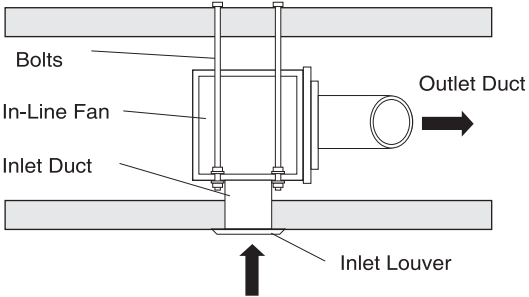
1. Floor Mount Installation



2. Ceiling Installation

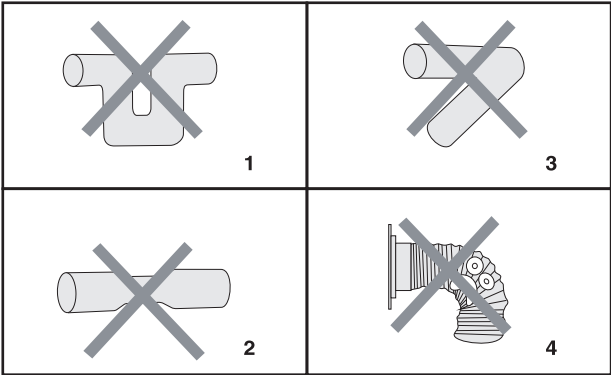


3. Horizontal Installation





VENTILATION FAN SNS - 350

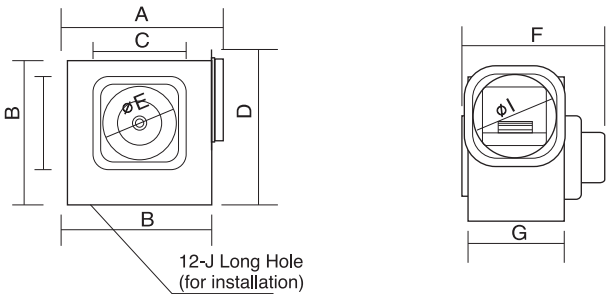


Note: Do not use tubes with the shapes shown above.

SPECIFICATIONS

Model	Frequency	Voltage (V)	Power (W)	Current (A)	Air Flow (CFM)	Noise Level (dB)
SNS-220	50Hz	220~240	80	0.26	220	43
SNS-350	50Hz	220~240	86	0.39	350	46
SNS-320	50Hz	220~240	88	0.30	320	45
SNS-450	50Hz	220~240	92	0.33	450	47
SNS-550	50Hz	220~240	98	0.35	550	48
SNS-900	50Hz	220~240	105	0.38	900	54
SNS-1000	50Hz	220~240	110	0.41	1000	57

EXTERNAL DIMENSIONS AND INSTALLATION DIMENSIONS



Model	A	B	C	D	E	F	G	I	J
SNS-220	265	230	120	256	80	203	151	150	6*20
SNS-350	265	230	120	256	95	213	151	150	6*20
SNS-320	265	230	120	256	95	213	151	150	6*20
SNS-450	345	300	160	346	122	295	210	200	10*20
SNS-550	345	300	160	346	122	295	210	200	10*20
SNS-900	373	330	200	376	122	343	255	200	12*24
SNS-1000	373	330	200	376	122	343	255	200	12*24

(mm)

USAGE

- 1. Use the switch to turn the unit on or off.
- 2. The ventilator may be used to extract unpleasant odors and moisture efficiently.

Note: If any abnormalities are observed when the ventilator is in use, turn off the unit immediately and contact the manufacturer.

WARNING: Avoid inserting fingers into the unit to prevent injuries or damage to the unit.

WARNING: Avoid installing the unit where there is a risk of exposure to water.

MAINTENANCE

- 1. Make sure that the main power is turned off before detaching the ventilating fan.
- 2. Wash the parts with water under 60°C. Do not use gasoline, benzine, and other chemical reagents to wash the ventilating fan.
- 3. Wipe away water residue with clean rags or air dry the ventilating fan.
- 4. Wipe the motor and other electrical components with clean rags.
- 5. Reassemble the ventilating fan.
- 6.If the supply cord is damaged, it must be replaced by the manufacturer, its service agent, or a qualified electrician in order to avoid hazards.

