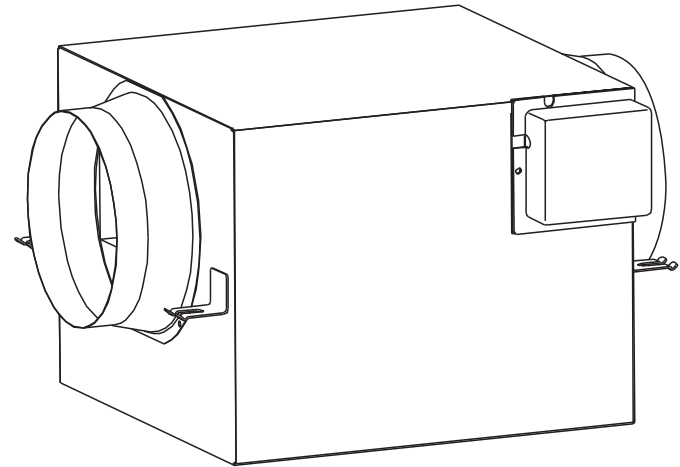




## USER GUIDE • SQ SERIES



Please read all instructions before operating  
this in-line fan.



**AireGard.com**

Toll-free: 1300-88-GARD (4273)  
Email: [info@AireGard.com](mailto:info@AireGard.com)

MAINTENANCE

- a) To ensure durability and optimum performance, inspect and clean the turbine fan once a year or whenever neccessary.
- b) If the supply cord is damaged, it must be replaced by the manufacturer its service agent, or authorized technician.

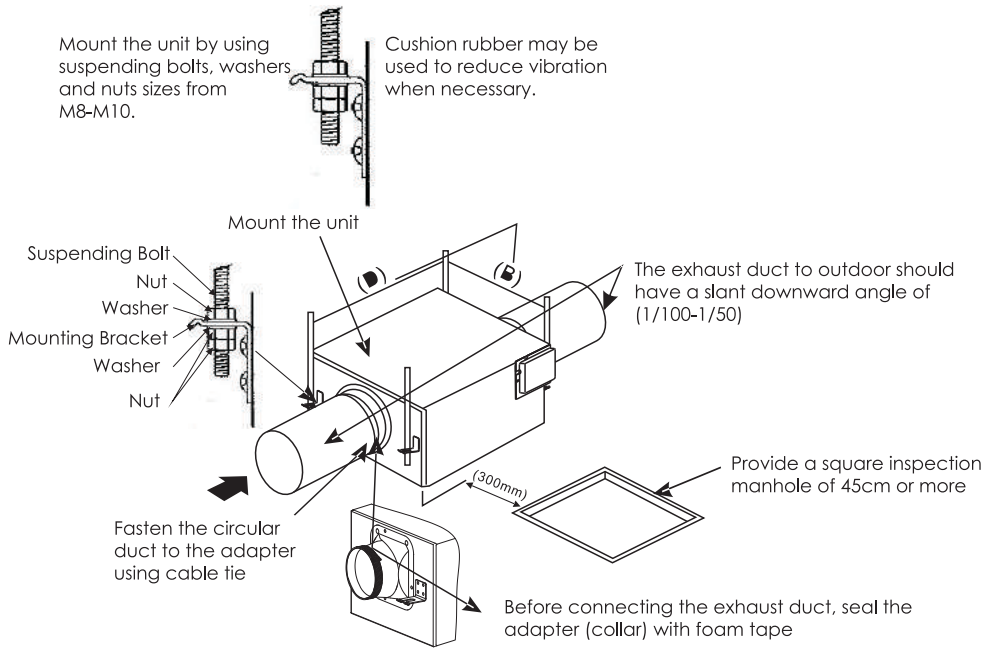
SPECIFICATIONS

Model	Air Speed	Motor Rating	Power Consumption	Air Flow	Noise Level
SQ-600	High	240v/ 50Hz	135 W	590 CFM	35 dB
	Low	240v/ 50Hz	125 W	530 CFM	34 dB

WARNING

- a) This appliance is not intended for use by persons (including children) with reduced physical, sensory or mental capabilities, or lack of experience and knowledge, unless under competent supervision.
- b) There should be an all poles switch with minimum 3mm contact gap in the fixed wiring.

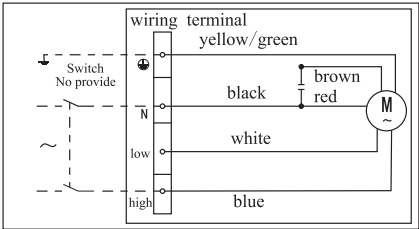
INSTALLATION



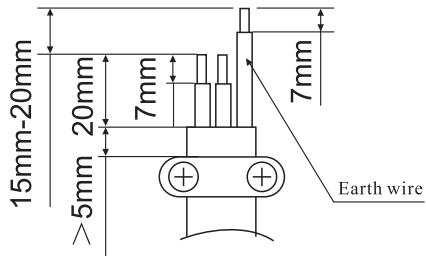
Engage a qualified electrician for all wiring works.

All wiring and grounding works must be carried out according to all local codes and ordinances.

WIRING DIAGRAM

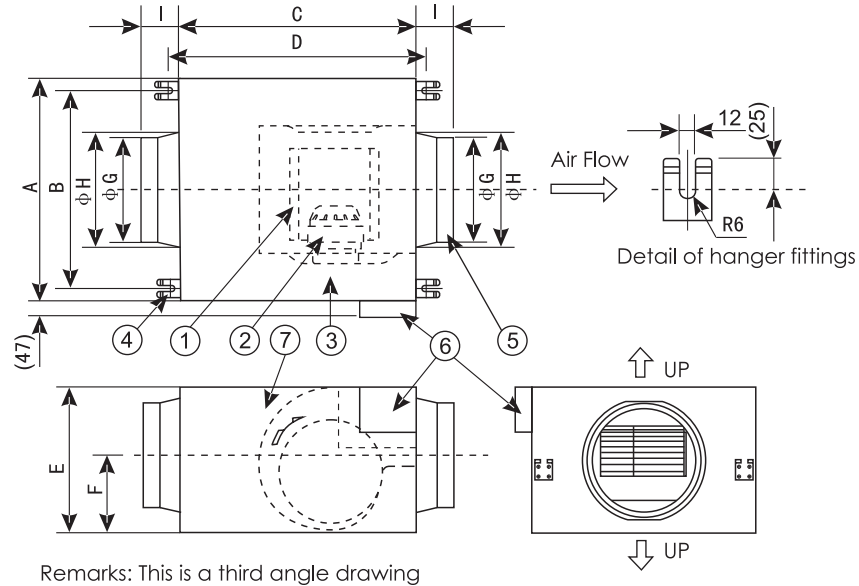


a) Connect neutral and earth wire to the corresponding terminal as shown above. To select high speed, connect the phase line to the “High” indicator of terminal; To select low speed, connect the phase line to “Low” indicator of terminal. Fasten power cord with terminal screws and tighten power cord with cord clip.



- b) The earth wire of the power cord must be longer than other wires by 15-20mm.
- c) Upon completion of wiring works, tighten the terminal cover with screws.

DIMENSIONS



No.	Parts Name	Qty
1	Impeller	1
2	Motor	1
3	Turbine fan housing	1
4	Mounting bracket	4
5	Adapter	2
6	Terminal cover	1
7	Inspection panel	1

↑ UP  
This figure indicates surfaces upward installation.

⊘ Other installation directions are prohibited.

Model	A	B	C	D	E	F	G	H	I	Duct
SQ-600	371	317	385	429	302	185	191	210	71	Φ200

\*measurement in mm